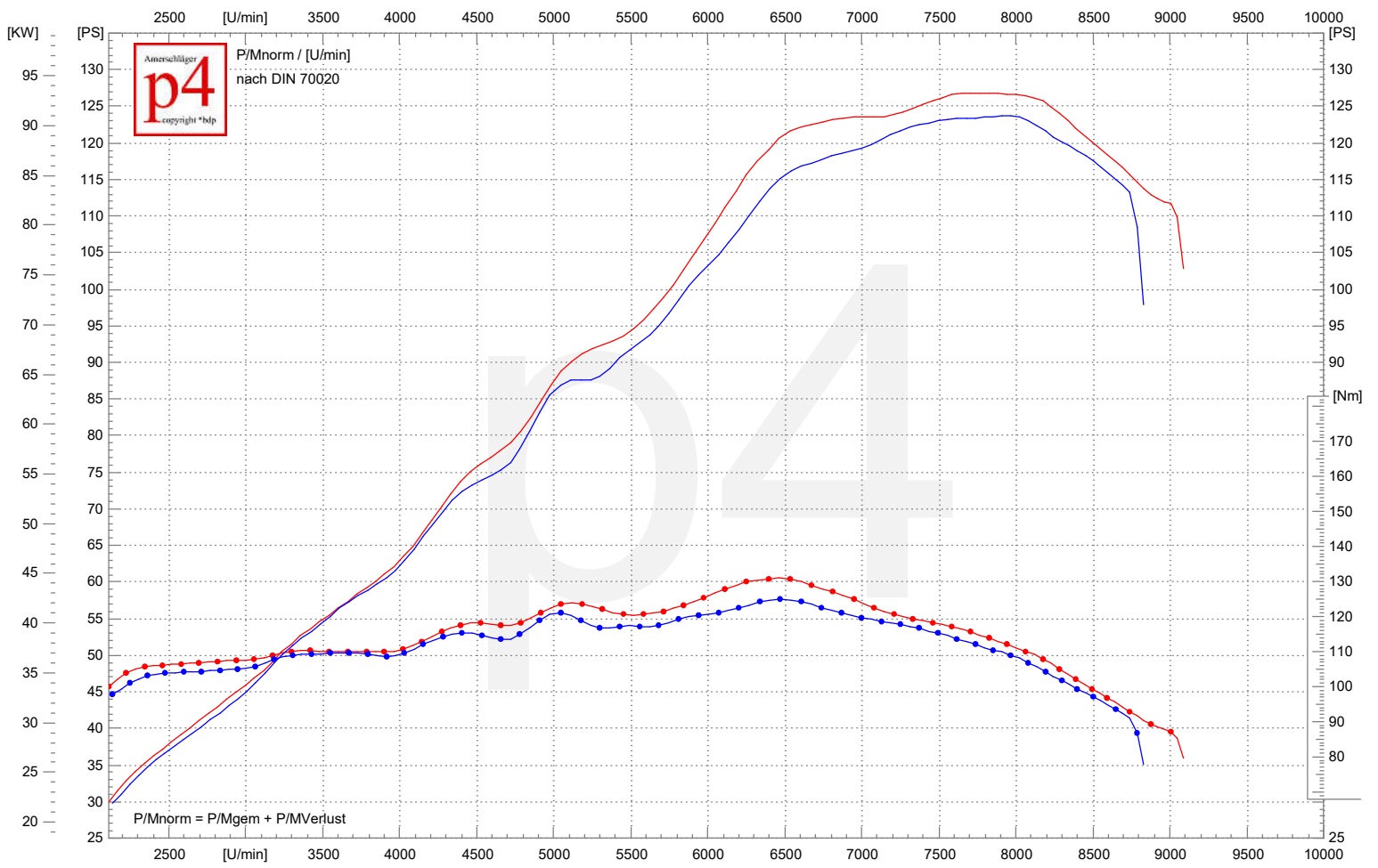


# Leistungsdiagramm



94  
 15.08.2019 12:02 BMW R 1200 RT  
 93.3 KW/7706 1/min | 126.9 PS/7706 1/min | 131.0 Nm/6464 1/min | vmax: 251.9 km/h  
 k=1,024 (30°C/47%/1006mbar)  
 R1200RT LC EU4 Final  
 MGM Technik ECU Tuning

77  
 15.08.2019 09:32 BMW R 1200 RT  
 91.0 KW/7912 1/min | 123.7 PS/7912 1/min | 125.0 Nm/6472 1/min | vmax: 243.8 km/h  
 k=1,019 (27°C/54%/1006mbar)  
 R1200RT LC EU4 Eingangsmessung